

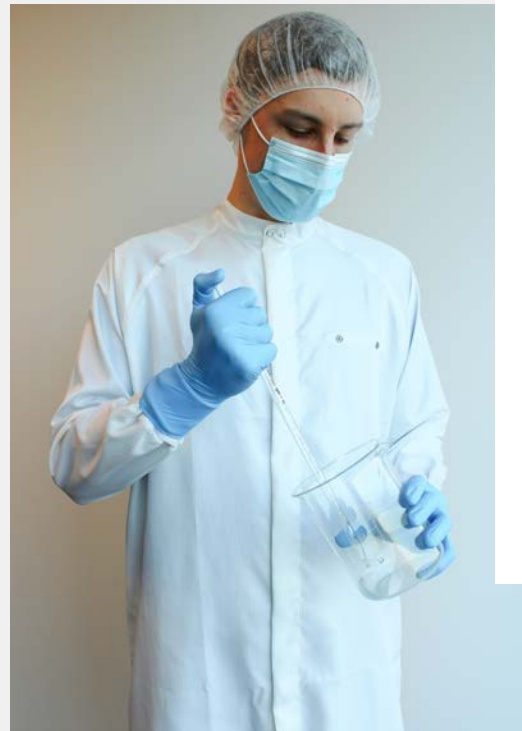
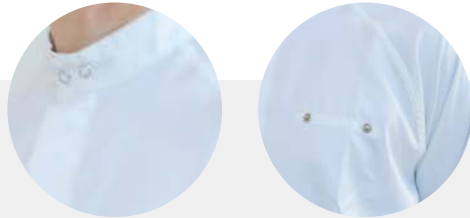
Short coat

- / stand collar with 2 studs
- / concealed zip front fastening
- / raglan sleeves with antistatic cuffs
- / studs for name tag on left chest
- / marker fabric
- / no pockets

fabric,
Alsistrong:
98% Polyester
2% Carbon
118 g/m2

colours:

<input type="checkbox"/>	white (ref. 1036301)
<input checked="" type="checkbox"/>	light blue (ref. 1036304)



Coat

- / stand collar with 2 studs
- / concealed stud front fastening
- / raglan sleeves with antistatic cuffs
- / studs for name tag on left chest
- / marker fabric
- / no pockets

fabric,
Alsistrong:
98% Polyester
2% Carbon
118 g/m2

colours:

<input type="checkbox"/>	white (ref. 1036297)
<input checked="" type="checkbox"/>	light blue (ref. 1036300)



Coat with integrated hood

- / integrated open hood with studs
- / concealed zip front fastening
- / raglan sleeves with antistatic cuffs
- / studs for name tag on left chest
- / marker fabric
- / no pockets

fabric,
Alsistrong:
98% Polyester
2% Carbon
118 g/m2

colours:

<input type="checkbox"/>	white (ref. 1035279)
<input checked="" type="checkbox"/>	light blue (ref. 1035241)



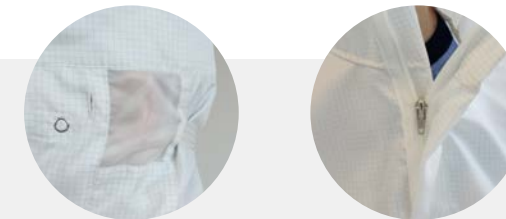
Hood - flat top

- / concealed zip front fastening
- / 2 studs to attach face mask
- / 2 side openings for cleanroom goggles
- / strap with buckle at the back for adjustment
- / marker fabric
- / ear pieces in mesh fabric

fabric,
Alsistrong:
98% Polyester
2% Carbon
118 g/m2

colours:

<input type="checkbox"/>	white (ref. 1036308)
<input checked="" type="checkbox"/>	light blue (ref. 1036309)



Hood - flat top

- / small eye-opening
- / 2 side openings for cleanroom goggles
- / strap with buckle at the back for adjustment
- / marker fabric

fabric,
Alsistrong:
98% Polyester
2% Carbon
118 g/m2

colours:

<input type="checkbox"/>	white (ref. 1036311)
<input type="checkbox"/>	light blue (ref. 1036312)



Tunic - knitted waistband

- / knitted crew neck
- / short inserted sleeves
- / knitted fabric at the waist
- / marker fabric

fabric,
Alsibandwash:
98% Polyester
2% Carbon
93 g/m2

light blue (ref. 1036315)



Hood - balloon shaped top

- / concealed zip front fastening
- / 2 studs to attach face mask
- / 2 side openings for cleanroom goggles
- / strap with buckle at the back for adjustment
- / marker fabric
- / ear pieces in mesh fabric

fabric,
Alsistrong:
98% Polyester
2% Carbon
118 g/m2

colours:

<input type="checkbox"/>	white (ref. 1036242)
<input type="checkbox"/>	light blue (ref. 1036310)



Tunic - seamed waistband

- / knitted crew neck
- / short inserted sleeves
- / seamed at the waist
- / marker fabric

fabric,
Alsibandwash:
98% Polyester
2% Carbon
93 g/m2

light blue (ref. 1034572)



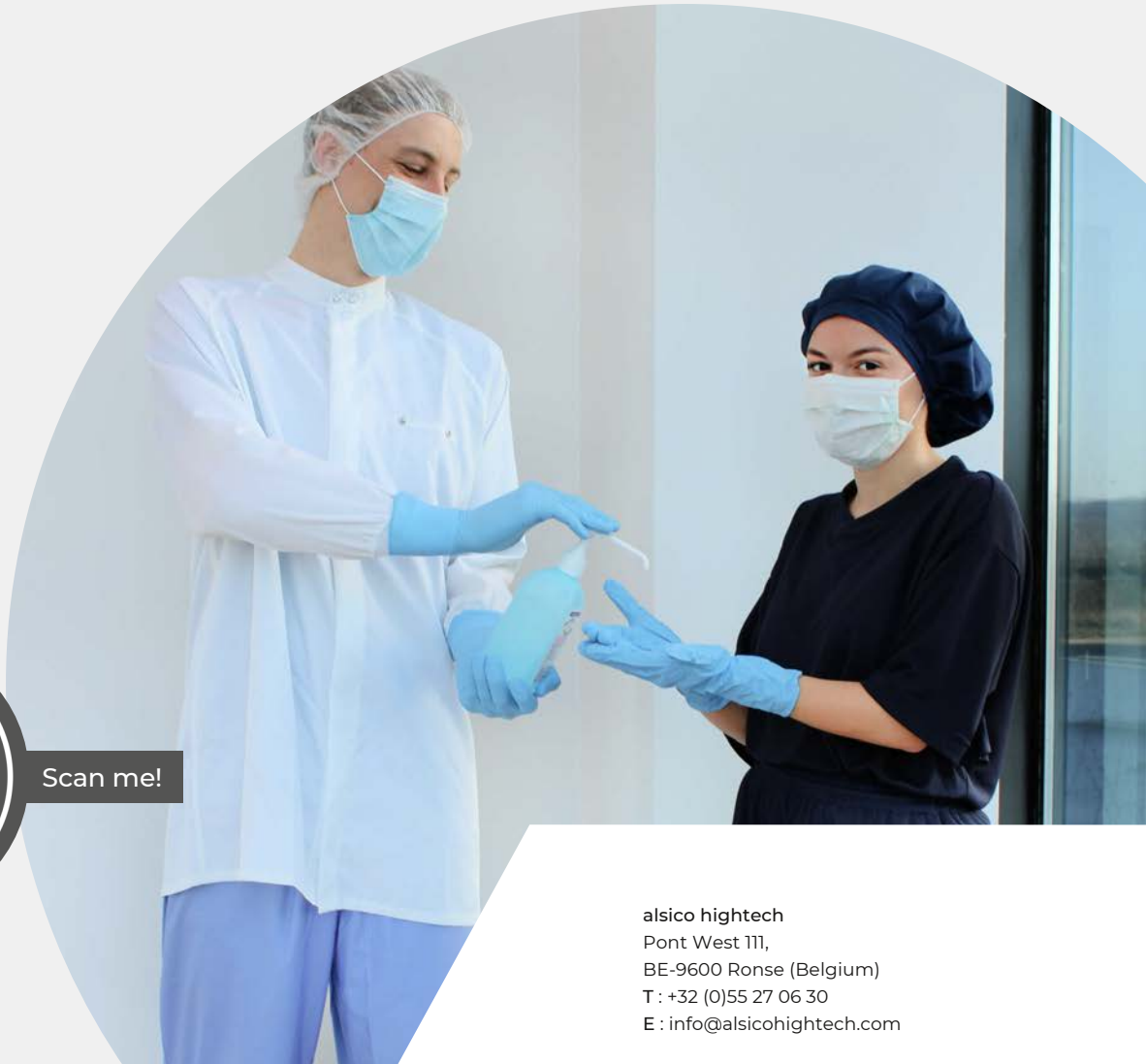


Tunic

- / V-neck
- / short inserted sleeves
- / 2 side vents
- / seamed at the waist

fabric,
Movix Antistatic:
96% Polyester
4% Carbon
152 g/m²

colours:
■ navy (ref. 1035421)



Scan me!

alsico hightech
Pont West 111,
BE-9600 Ronse (Belgium)
T : +32 (0)55 27 06 30
E : info@alsicohightech.com

[/ www.alsicohightech.com](http://www.alsicohightech.com)